

IFUME 400i

The Future of Fume Extraction

Laser
Coding &
Marking



FEATURES

- Full colour touch screen display
- Highest grade HEPA and carbon technology
- Automatic electronic flow control - maintains a constant extraction rate even as the filter blocks
- Gas and particle sensors to warn the operator
- Operate worldwide with no loss of performance

SPECIFICATIONS

| | |
|----------------|-------------|
| Voltage | 90v - 254v |
| Part Number | 1704022 |
| Wattage | 1.1kW |
| Frequency | 50Hz / 60Hz |
| Cabinet Height | 1070mm |
| Cabinet Width | 528mm |
| Cabinet Depth | 465mm |
| Cabinet Weight | 60Kg |
| Sound Level | <60dBa |
| Airflow | 400m3/h |

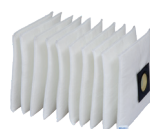
INCLUDED AS STANDARD...

FILTERS



Main Filter
Code
113505

Description
HEPA/Chemical



Pre-filter
Code
111057

Description
F6 Labyrinth

Find out more:



www.purex.co.uk



purex@purex.co.uk



+44 (0)1405 746030

CONNECTION KIT

*Connection kit is included
see overleaf for options*

OPTIONS

Main Filter

| Code: | Description: |
|---------|-----------------------------|
| 113505H | HEPA/Chemical (Hydrophobic) |
| 113579 | HEPA/Twin Chemical |
| 113668 | HEPA/Twin Chemical |
| 113512 | HEPA/Chemical (Cleanroom) |
| 113669 | HEPA/Chemical (Cleanroom) |
| 113508 | Chemical |
| 113809 | HEPA |
| 113513 | Solvent Lock |

Main Filter

| Code: | Description: |
|---------|------------------|
| 113662 | Chemical Special |
| 113505P | Chemical Special |
| 113531 | Pleated Bag |

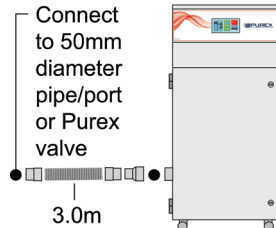
Connection Kits

Hose End Diameter

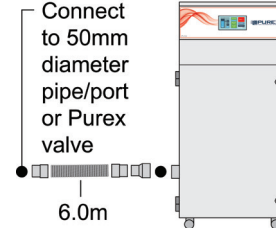
Hose Length

Purex Inlet Diameter

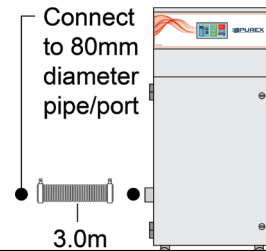
Code: 100032 50mm 3m 80mm



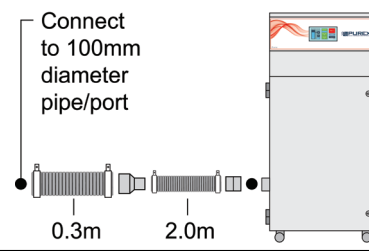
Code: 100043 50mm 6m 80mm



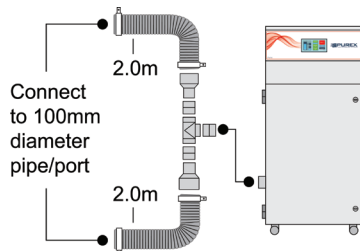
Code: 120299 80mm 3m 80mm



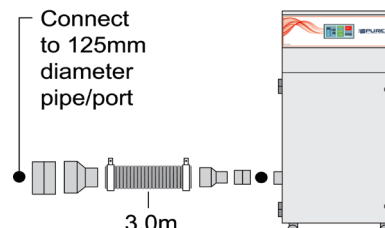
Code: 120288 100mm 2.3m 80mm



Code: 120297 100mm 2m 80mm

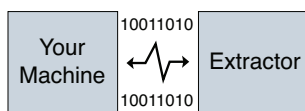


Code: 100171 125mm 3m 80mm



If you do not see a connection kit that fits your machine or pipework, please contact Purex or your representative

Interfacing



Interfacing can remotely start the Purex machine when the connected machine starts.

Interfacing can also warn the connected machine when the Purex machine is in alarm.

Take a look through our Interfacing Guide to see our extensive range of options



Purex International Limited
QWP House, Island Drive
Capitol Park, Thorne
Doncaster, UK
DN8 5UE